



Alrededores

PBD

4
BEDROOMS

5
BATHROOMS

200
PLOT

310
BUILT

Fantastic semi-detached house in the El Polo Sur Urbanization, in San Enrique, 5 minutes from the Port of Sotogrande and in front of the AYALA POLO CLUB slopes.

Designed by the renowned architect Joaquín Torres (Acero), with modern architecture, its own garden and lots of light.

Totally newly furnished.

From the terrace, with pool and chill-out, you can enjoy spectacular open views of the mountains and the fields

of AYALA POLO. The property is located in the upper and quieter area of the urbanization.

Built on 3 floors + 1 with the following distribution:

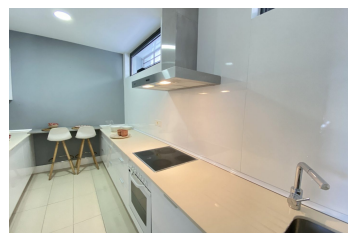
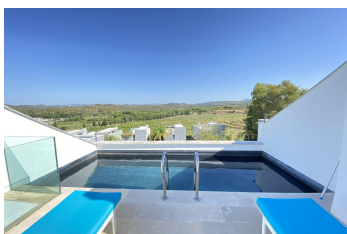
Basement: 2 bedrooms with their bathrooms and a multipurpose room, now used as a gym and storage room.

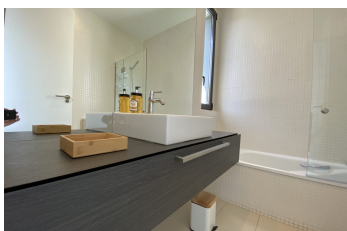
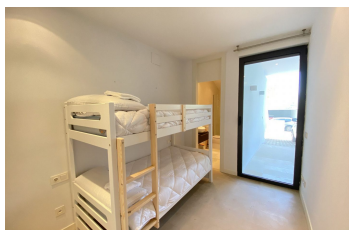
Ground floor: living room with fireplace, kitchen and exit to the garden and terrace.

Floor 1: 2 bedrooms with their bathrooms.

Covered floor: Built-in swimming pool and a chill-out area.

Gated community with barriers, very quiet, good neighbors and well maintained.







Miguel Mellado
T. +34 686 668 852
sotogrande@miguel-properties.com

