



## La Marina

**PBD**

3  
BEDROOMS

3  
BATHROOMS

PLOT

180  
BUILT

Conveniently located in the residential area in the heart of the Marina, close to excellent outdoor attractions and interesting dining options.

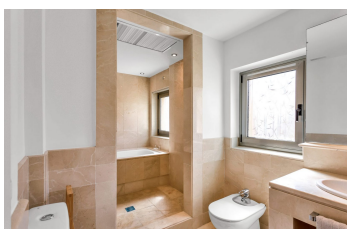
The great light and fresh air of this property, as well as the beautiful views around it, will make this a memorable stay.

The focus of this penthouse is the living room, kitchen and dining room, with bright outlooks and sumptuous views from the terrace. The essence of the interior blends smoothly with the beauty of the exterior.

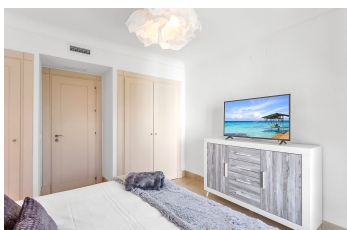
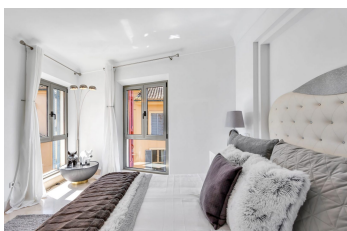
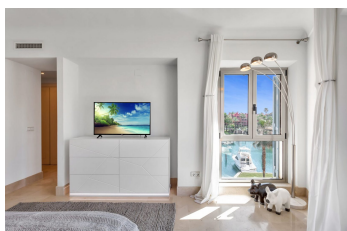
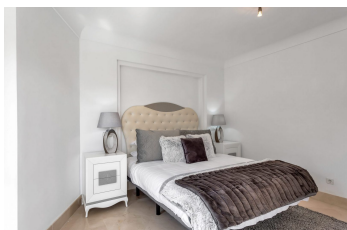
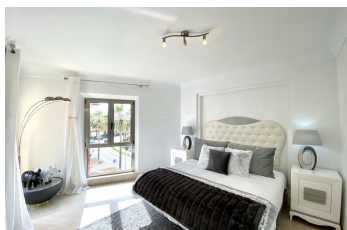
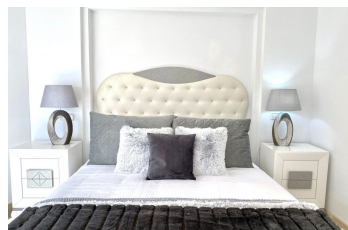
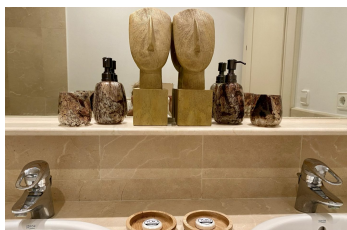
The penthouse is self-contained and only certain basic toiletries and consumables are provided upon arrival.

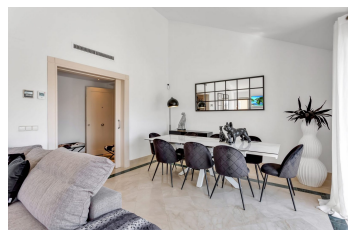
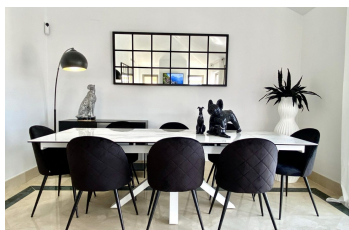
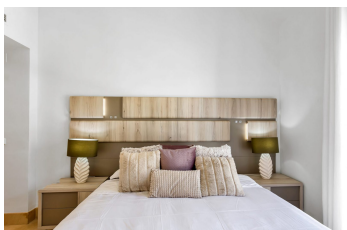
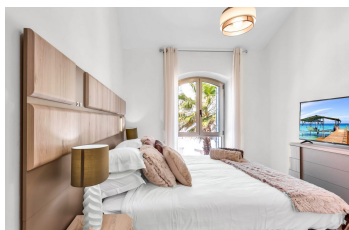
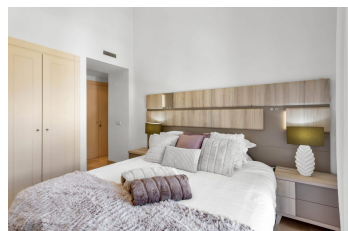
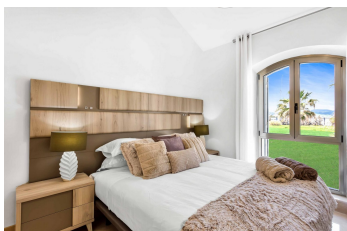
The playground of the rich and famous, Sotogrande, located on the Mediterranean coast, west of Malaga's Costa del Sol, is the largest and most prestigious private residential development in Andalusia.

Sotogrande is truly the unique Spanish experience. Sotogrande is a very "Pebble Beach" resort with a suburban feel: wide avenues lined with large properties, each with its own "single-family home".

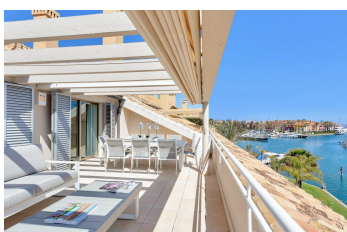
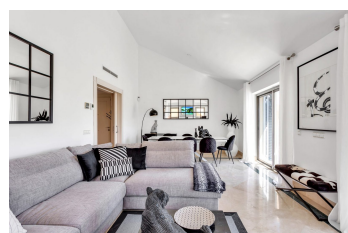
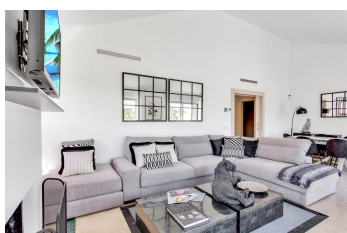
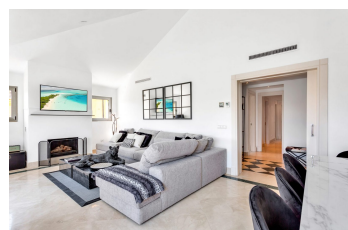
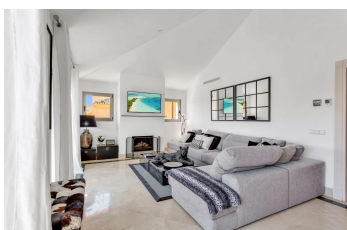
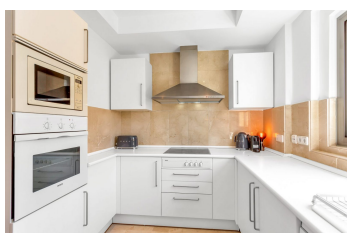
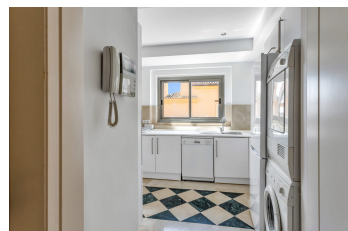


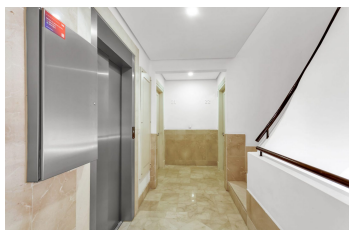












[Watch video](#)