



## La Reserva

For sale at **9.800.000 €**

6  
BEDROOMS

7  
BATHROOMS

4481  
PLOT

2041  
BUILT

The project, located in the exclusive urbanization of the Sotogrande Reserve and specifically in the 15 area, where a small number of projects are located within a gated community immersed in the Reserve, is designed with cylindrical volumes that follow the slope of the land and a stone façade that harmonizes with the landscape, subtly integrating into its natural environment. From it, you can enjoy panoramic views of the reserve, the Mediterranean, the Guadiaro River estuary, Gibraltar and the enigmatic Africa.

The concept of zero energy consumption without giving up maximum comfort is the challenge of Villa Noon. It consists of integrating nature and open spaces into a designer and luxury home, with the aim of practically eliminating the environmental impact. It uses renewable energy to supply all its needs, making them energy self-sufficient villas. All these economic and environmental benefits do not detract from the aesthetics and luxury of the villas. To achieve this, a geothermal system with solar panels and battery accumulation generates enough energy to satisfy the entire consumption of the house in one year, as well as the 90,000 kilometers of a Polestar 2 type car. All of this can be achieved without giving up aesthetics, the good materials and the greatest exclusivity.

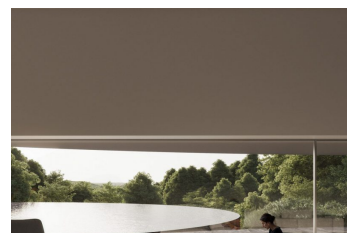
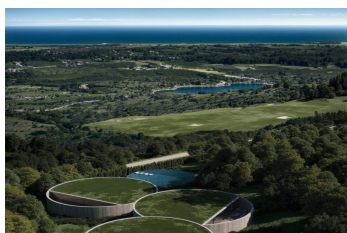
From the highest level of the plot of more than 4.50m<sup>2</sup>, you access a patio characterized by a sheet of water that creates a pleasant space to enjoy at various times of the day. From this space, an external staircase leads to the circle patio that houses the rooms and an interior hall with endless views. At an even lower level, another circle contains the day spaces, such as the kitchen, dining room, living room and an indoor spa, all designed to maximize comfort and connection with the natural environment.

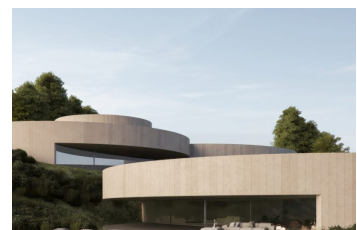
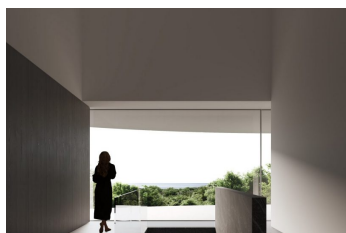
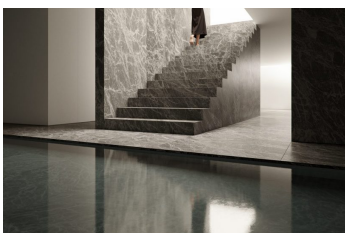
At street level, at the end of the plot, are the accesses to the garages, integrating functionality and aesthetics without compromising the harmonious design of the home. This architectural arrangement allows the house to blend into its surroundings, respecting the natural topography and offering a living experience that celebrates the interaction between the building and the landscape.

3 Elevators

Indoor pool, sauna, GYM

Optional Volume for guest villa.





[Watch video](#)